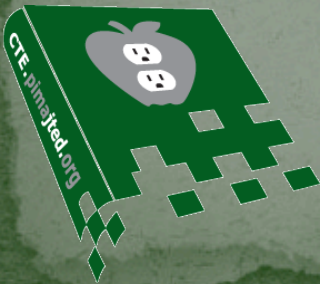


# Construction: Plumbing

## **WATER DISTRIBUTION SYSTEM (ROUGH IN)**

LESSON 1 OF 12



# Bell Work

1. List all the times you accessed water over the last 24 hours
2. Describe briefly how the water got to where you accessed it.



# PowerPoint Note Master

- 1. Write the date
- 2. Write your first and last name
- 3. Write the class period
- Fill in the above information on the cover sheet of your handout



# Preview Objectives

- Student will prepare to assemble a water distribution system by:
  1. Demonstrating an understanding of the terms.
  2. Drawing the layout of their residence and annotating with water usage symbols.

Underline key phrases and terms



# Terminology

- **Faucet**-a device for regulating the flow of water from a water distribution system
- **Fixture**-any of several devices that provide a supply of water or sanitary disposal of liquid or solid wastes, i.e.: tubs, showers, sinks and toilets
- **Water distribution system**-the network of pipes and fittings that transports water under pressure to fixtures and other water-using equipment and appliances.
- **Residence/Residential**: place in which one lives/of relating to or having residence
- **Piping**: a system of pipes in plumbing made of various plastics and/or metals
- **Layout**: an arrangement or plan, especially the schematic arrangement of parts or area
- **Water meter**: a device for measuring the quantity or rate of water flowing through piping.

# Part Purpose Function

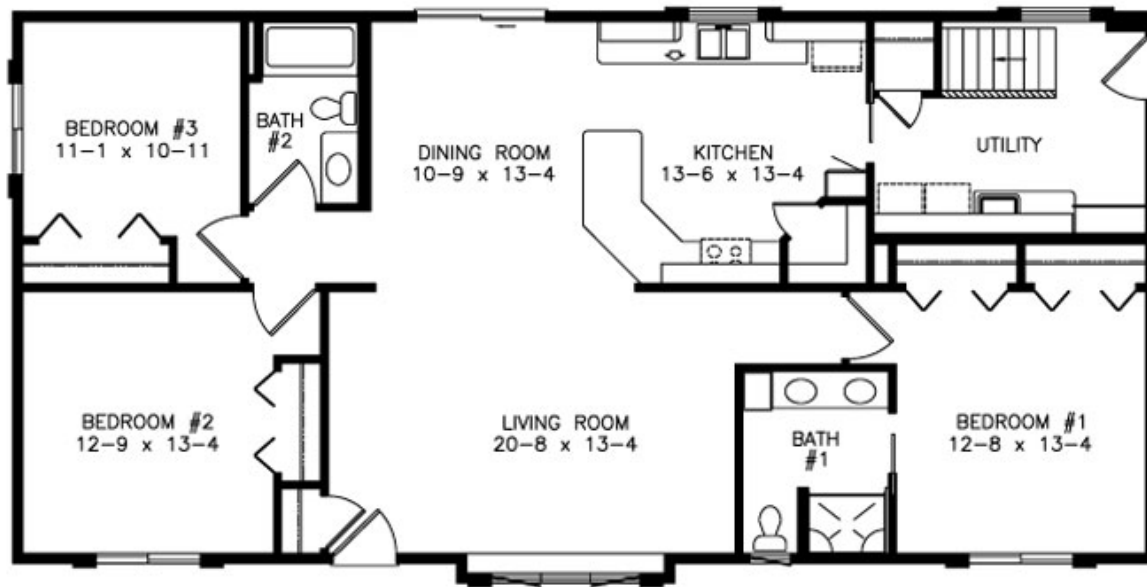
What is the Part?	What is the Purpose?	What is the Function?
<b>Faucet</b>	To turn on and off the supply of water	To supply water on demand.
<b>Fixture</b>	Supply water or dispose of waste	
<b>Water Distribution System</b>		
<b>Residence/ Residential</b>		

Complete the Attribute Chart: worth 24 points, 4 points per term



# Objective # 2: Draw Your Floor Plan

Completed floor plan worth 33 points: 20 for walls and 13 for labels



## Sketch

- In pencil
- On graph Paper
- Only basic walls
- With room labels
- Major appliances and fixtures drawn
- No doors or windows

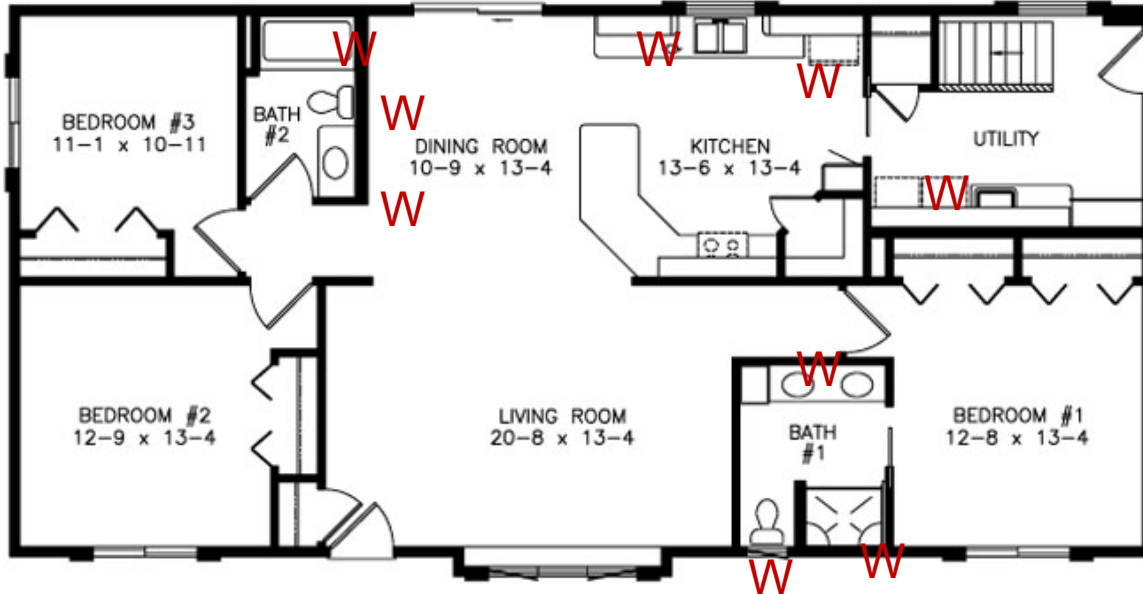
<http://www.ambienthomes.com/images/plans/BrookdaleFloorPlan.jpg>

#12752

2858 3BDRM BROOKDALE

1624 sq ft

# Draw Your Floor Plan



<http://www.ambienthomes.com/images/plans/BrookdaleFloorPlan.jpg>

#12752

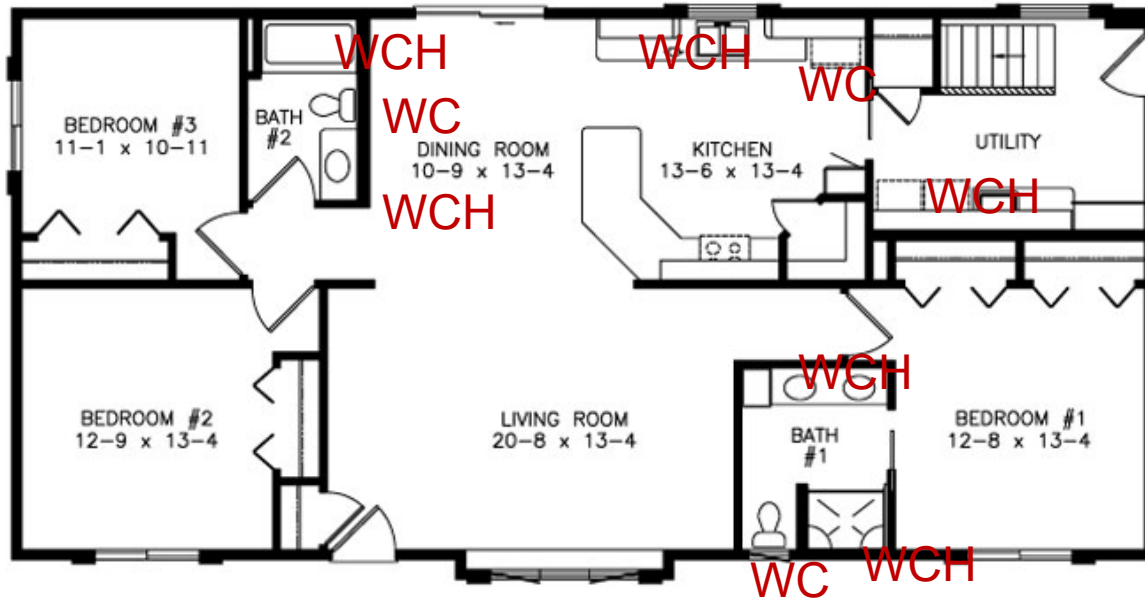
2858 3BDRM BROOKDALE

1624 sq ft

Label  
your floor  
plan with  
a “W”  
where  
ever  
water is  
delivered.



# Draw Your Floor Plan



<http://www.ambienthomes.com/images/plans/BrookdaleFloorPlan.jpg>

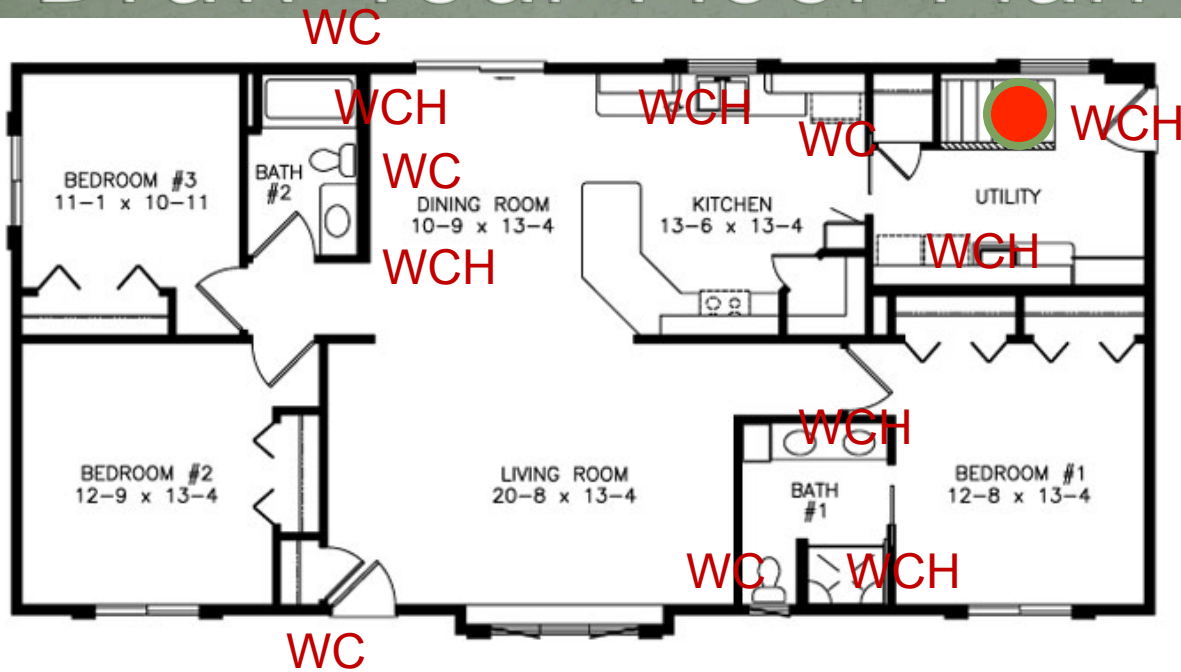
#12752

2858 3BDRM BROOKDALE

1624 sq ft

Add a “C”  
for cold  
water  
service  
and an  
“H” for  
hot water  
service

# Draw Your Floor Plan



<http://www.ambienthomes.com/images/plans/BrookdaleFloorPlan.jpg>

#12752

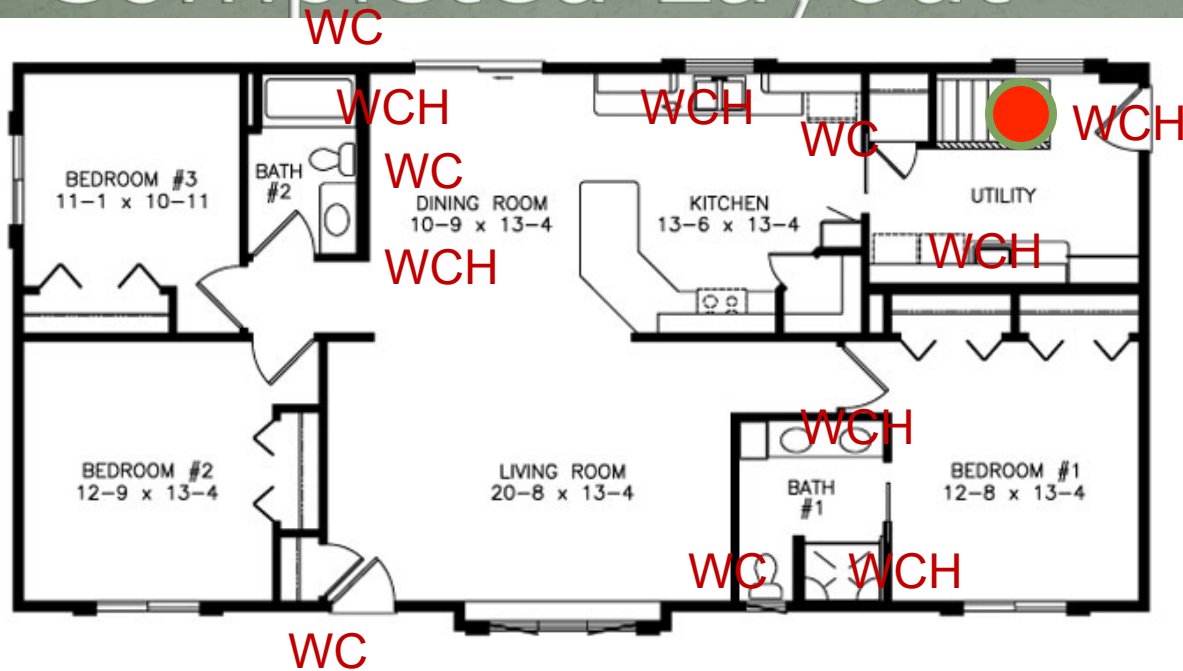
2858 3BDRM BROOKDALE

1624 sq ft

Add a  
circle for  
your hot  
water  
heater  
and  
“WCH”  
next to it.



# Completed Layout



<http://www.ambienthomes.com/images/plans/BrookdaleFloorPlan.jpg>

#12752

2858 3BDRM BROOKDALE

1624 sq ft

## MY PLUMBING LAYOUT

Annotations worth 33 points: 11 for W, 11 for C and 11 For H



# Tomorrow: Water Distribution System (cont.)

- Student will prepare to assemble a water distribution system by:
- Explaining what determines the layout of the water distribution system.
- Listing the components of a water distribution system.
- Explaining how the water distribution systems works.
- Students will turn in Plumbing Layout and Graphic Organizer.



# Objectives Covered

- Student will prepare to assemble a water distribution system by:
- Demonstrating an understanding of the terms.
- Drawing the layout of their residence and annotating with water usage symbols.
- Give a thumbs up if you completed the objective or a thumbs down if you did not